

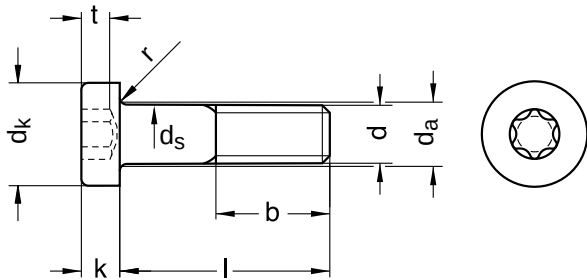
B 7984 similar to DIN 7984, ISO 14580

Cylinder screws

Hexalobular drive with low head

Steel 08.8 | zinc-plated | Cr(VI)-free | Metric thread

Further information: Due to their head geometry, these screws are limited in their load bearing capacity, see DIN EN ISO 898-1



Diameter (d)	b		da max.	dk		ds		k		r	Pitch (P)	t		Tool size
	l up to 125	l up to 200		min.	max.	min.	max.	min.	max.			max.	min.	
M3	12	-	3.6	5.32	5.5	2.86	3	1.86	2.0	0.10	0.50	1.27	1.01	T10
M4	14	-	4.7	6.78	7.0	3.82	4	2.66	2.8	0.20	0.70	1.66	1.27	T20
M5	16	-	5.7	8.28	8.5	4.82	5	3.32	3.5	0.20	0.80	1.91	1.52	T25
M6	18	-	6.8	9.78	10.0	5.82	6	3.82	4.0	0.25	1.00	2.29	1.90	T30
M8	22	28	9.2	12.73	13.0	7.78	8	4.82	5.0	0.40	1.25	3.05	2.66	T45

nominal size	Length (l)	
	min.	max.
6	5.76	6.24
8	7.71	8.29
10	9.71	10.29
12	11.65	12.35
16	15.65	16.35
20	19.58	20.42

nominal size	Length (l)	
	min.	max.
25	24.58	25.42
30	29.58	30.42

Diameter (d)	Length (l)							
	6	8	10	12	16	20	25	30
M3	●	●	●	●	●			
M4	●	●	●	●	●			
M5				●	●	●	●	
M6				●	●	●	●	
M8					●	●	●	●

• Combinations available in the eShop | Other sizes on request

All technical data refer to the measure mm

