

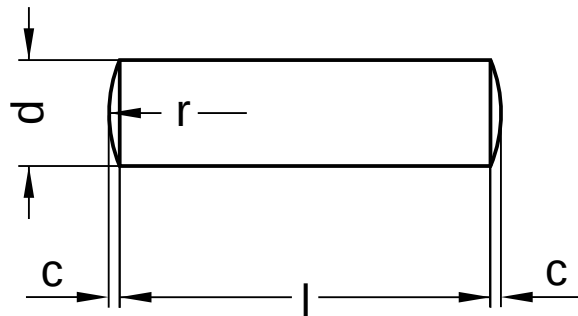
DIN 7 similar to ISO 2338

Parallel pins

With oval point | tolerance field m6

Steel | bright | Cr(VI)-free

Further information: DIN-standard has been withdrawn



Diameter (d)	c max.	r
2	0.30	2
3	0.45	3
4	0.60	4
5	0.75	5
6	0.90	6
8	1.20	8
10	1.50	10
12	1.80	12
16	2.50	16
20	3.00	20

Length (l) nominal size
5
6
8
10
12
14
16
18
20
24
28
30
32
36

Length (l) nominal size
40
45
50
55
60
65
70
80
90
100
120

All technical data refer to the measure mm



DIN 7 similar to ISO 2338

Parallel pins

With oval point | tolerance field m6

Steel | bright | Cr(VI)-free

Diameter (d)	Length (l)																									
	5	6	8	10	12	14	16	18	20	24	28	30	32	36	40	45	50	55	60	65	70	80	90	100	120	
2	●	●	●	●	●	●	●	●	●																	
3	●	●	●	●	●	●	●	●	●	●	●	●	●													
4		●	●	●	●	●	●	●	●	●	●	●	●	●	●											
5			●	●	●	●	●	●	●	●	●	●	●	●	●	●	●									
6			●	●	●	●	●	●	●	●	●	●	●	●	●	●	●	●	●							
8				●	●	●	●	●	●	●	●	●	●	●	●	●	●	●	●	●			●	●		
10							●	●	●	●	●	●	●	●	●	●	●	●	●	●			●	●		●
12									●	●	●	●	●	●	●	●	●	●	●	●			●	●		●
16													●	●	●		●		●	●	●	●	●	●	●	●
20															●	●	●	●	●			●	●	●	●	●

• Combinations available in the eShop | Other sizes on request

All technical data refer to the measure mm

