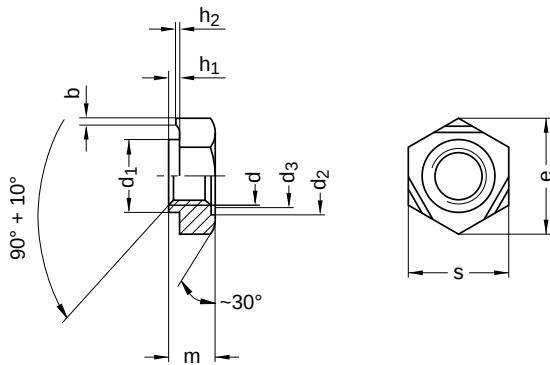


**DIN 929**  
**Hexagon weld nuts**

Steel | bright | Cr(VI)-free | Metric thread



Diameter (d)	nominal size	b		d <sub>1</sub> nominal size	d <sub>2</sub> nominal size	d <sub>3</sub> min.	h <sub>1</sub>	
		min.	max.				min.	max.
M3	0.80	0.60	1.00	4.5	4.5	3.15	0.45	0.55
M4	0.80	0.60	1.00	6	6	4.20	0.55	0.65
M5	0.80	0.60	1.00	7	7	5.25	0.60	0.70
M6	0.90	0.68	1.12	8	8	6.30	0.60	0.75
M8	1.00	0.75	1.25	10.5	10.5	8.40	0.75	0.90
M10	1.25	0.95	1.55	12.5	12.5	10.50	0.95	1.15
M12	1.25	0.95	1.55	14.8	14.8	12.60	1.20	1.40
M14	1.50	1.10	1.90	16.8	16.8	14.70	1.60	1.80
M16	1.50	1.10	1.90	18.8	18.8	16.80	1.60	1.80

Diameter (d)	h <sub>2</sub>		m nominal size	e min.	s nominal size	Pitch (P)	Tool size
	max.	min.					
M3	0.25	0.15	3.0	8.15	7.5	0.50	SW 7,5
M4	0.35	0.25	3.5	9.83	9.0	0.70	SW 9
M5	0.40	0.30	4.0	10.95	10.0	0.80	SW 10
M6	0.40	0.30	5.0	12.02	11.0	1.00	SW 11
M8	0.50	0.35	6.5	15.38	14.0	1.25	SW 14
M10	0.65	0.50	8.0	18.74	17.0	1.50	SW 17
M12	0.80	0.60	10.0	20.91	19.0	1.75	SW 19
M14	1.00	0.80	11.0	24.27	22.0	2.00	SW 22
M16	1.00	0.80	13.0	26.51	24.0	2.00	SW 24

All technical data refer to the measure mm

