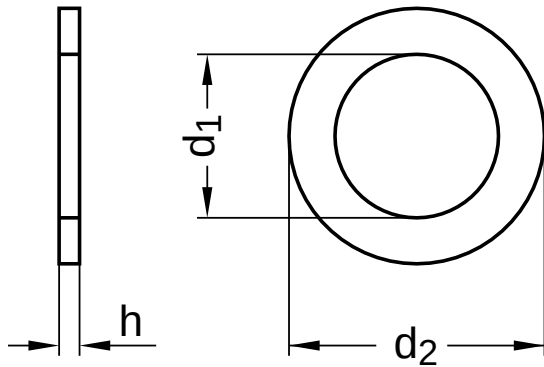
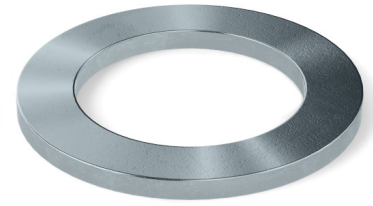


**DIN 988**  
**Shim rings**

Steel | zinc-plated, thick-film passivated (VZD) | Cr(VI)-free



Diameter (d)	d <sub>1</sub>		d <sub>2</sub>			h		
	nominal size	min.	max.	nominal size	min.	max.	min.	max.
8	8	8.04	8.19	14	13.77	13.95	0.25	0.3
15	15	15.05	15.23	21	20.72	20.94	0.45	0.5
16	16	16.05	16.23	22	21.72	21.94	0.95	1.0
18	18	18.05	18.23	25	24.72	24.94	0.95	1.0
20	20	20.06	20.28	28	27.72	27.94	1.95	2.0
25	25	25.06	25.28	36	35.67	35.92	1.95	2.0
26	26	26.06	26.28	37	36.67	36.92	0.95	1.0
28	28	26.06	28.28	40	39.67	39.92	0.95	1.0
35	35	35.08	35.33	45	44.67	44.92	0.95	1.0
37	37	37.08	37.33	47	46.67	46.92	1.95	2.0
40	40	40.08	40.33	50	49.67	49.92	0.95	1.0
90	90	90.12	90.47	110	109.53	109.88	0.95	1.0

All technical data refer to the measure mm

