

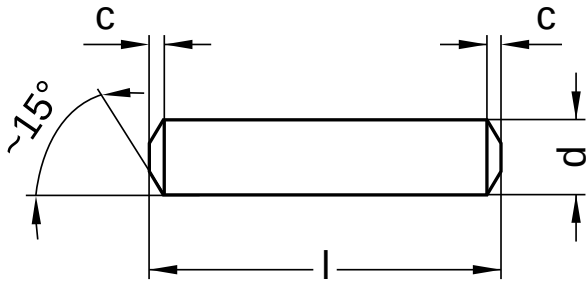
**ISO 8734** similar to DIN 6325

## Parallel pins

Hardened

Steel | bright | Cr(VI)-free

Further information: DIN standard has been withdrawn



Diameter (d)	c	Design
1.5	0.30	Typ A (durchgehärtet)
2	0.35	Typ A (durchgehärtet)
3	0.50	Typ A (durchgehärtet)
4	0.63	Typ A (durchgehärtet)
5	0.80	Typ A (durchgehärtet)
10	2.00	Typ A (durchgehärtet)

nominal size	Length (l)	
	min.	max.
6	5.75	6.25
8	7.75	8.25
12	11.50	12.50
14	13.50	14.50

nominal size	Length (l)	
	min.	max.
18	17.50	18.50
20	19.50	20.50
50	49.50	50.50

Diameter (d)	Length (l)						
	6	8	12	14	18	20	50
1.5	●				●		
2	●		●			●	
3		●	●				
4							●
5					●		
10							●

• Combinations available in the eShop | Other sizes on request

All technical data refer to the measure mm

