

RIVKLE® Pin

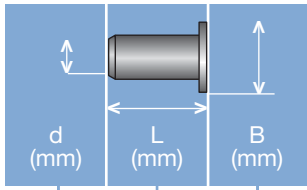
For the installation of the threaded mandrel on RIVKLE® setting tools P2005, P1007 and P2007.

The gap in this ring must be turned until the bolt is covered so that the bolt is easier to install.

Technical information can be found on the last page.



Article number	For tool type
23680300009	P2005, P1007, P2007



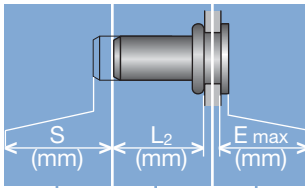
Head diameter
Overall length
Thread size



Grip range
 Defines the range of total thickness of the customers part (even if it consists of more than one layer)



Hole geometry
 If round → diameter
 If hexagonal → wigth across flats

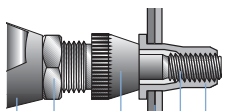


Head projection after setting
 Variable according to the application (setting load, material substrate, etc.)

Blind side projection after installation
 Defines the clearance needed on the blind side (cannot be used for quality control)

Setting stroke
 Difference of total length before and after installation

RIVKLE® Nut



RIVKLE® Stud



- RIVKLE®
- Mandrel*
- Customers part
- Anvil*
- Counter nut
- Setting tool

in accordance to chosen RIVKLE®

All technical data refer to the measure mm

