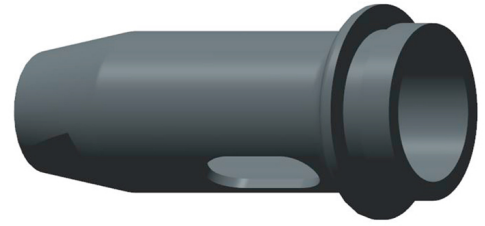


## RIVKLE® Nose piece

For blind rivet studs and riveting forces > 18 kN (M8 and M10).

Technical information can be found on the last page.



Diameter (d)	Article number	For tool type
M3 - M10	23616600303	B2007

All technical data refer to the measure mm

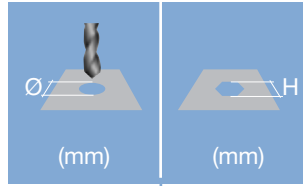




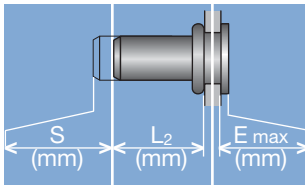
**Head diameter**  
**Overall length**  
**Thread size**



**Grip range**  
 Defines the range of total thickness of the customers part (even if it consists of more than one layer)



**Hole geometry**  
 If round → diameter  
 If hexagonal → width across flats

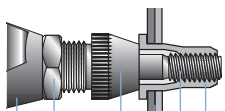


**Head projection after setting**  
 Variable according to the application (setting load, material substrate, etc.)

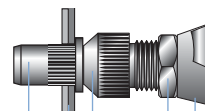
**Blind side projection after installation**  
 Defines the clearance needed on the blind side (cannot be used for quality control)

**Setting stroke**  
 Difference of total length before and after installation

**RIVKLE® Nut**



**RIVKLE® Stud**



- RIVKLE®
- Mandrel\*
- Customers part
- Anvil\*
- Counter nut
- Setting tool

\*in accordance to chosen RIVKLE®\*

All technical data refer to the measure mm

